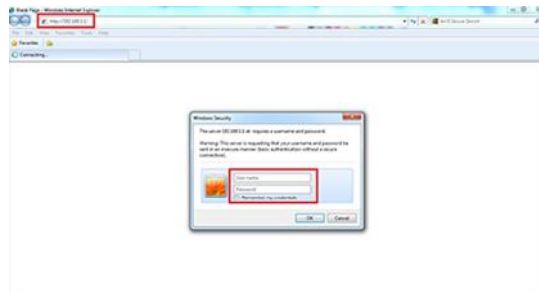
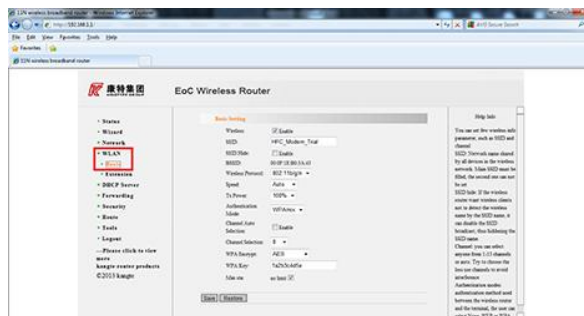


Setting SSID and Password at KingType Wireless Cable Modem

1. Open the internet browser on your laptop / PC as Internet Explorer / Mozilla Firefox / Google Chrome and type `http://192.168.1.1` in the address browser and then press Enter and put the username "admin" and password "admin".
1. Buka internet browser pada laptop/PC seperti Internet Explorer/Mozilla Firefox/Google Chrome dan ketikkan `http://192.168.1.1` pada alamat browser lalu tekan Enter dan masukkan username "admin" dan password "admin".



2. Go to the menu "WLAN"> "Basic"
2. Masuk ke menu "WLAN" > "Basic"



3. Change the SSID and WPA Key (password) with the SSID and WPA Key (password) that you want. For other parameters please let default.
3. Ganti SSID dan WPA Key (password) dengan SSID dan WPA Key (password) yang anda inginkan. Untuk parameter lain harap dibiarkan default.

Notes:

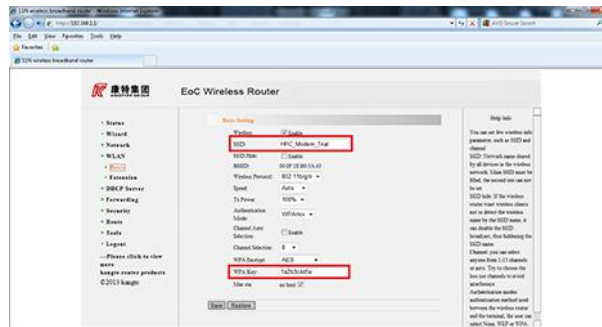
SSID can only use numbers and letters (large / small) and are not allowed to use the space.

WPA Key (password) must consist of 8-63 characters and can only use numbers and letters (uppercase / lowercase) and are not allowed to use the space.

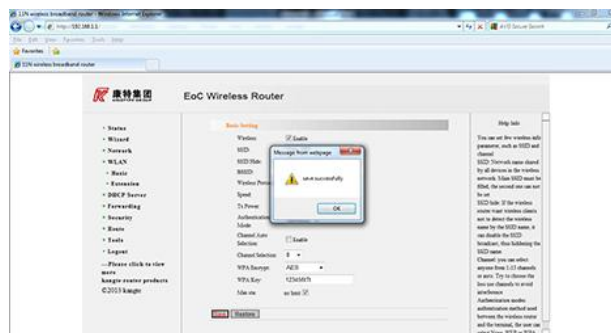
Catatan:

SSID hanya dapat menggunakan nomor dan huruf (besar/kecil) dan tidak diperkenankan menggunakan spasi.

WPA Key (password) harus terdiri dari 8-63 karakter dan hanya dapat menggunakan nomor dan huruf (besar/kecil) dan tidak diperkenankan menggunakan spasi.



4. If you've changed then press "Save" and it will display a notification pop up "save succesfully".
4. Jika sudah mengganti tekan "Save" dan akan muncul notifikasi pop up "save succesfully"..



5. Click the "Logout" > "OK" > "Yes" to exit the application. Automatically your browser application will be closed.
5. Klik menu "Logout" > "OK" > "Yes" untuk keluar dari aplikasi. Secara otomatis aplikasi browser anda akan tertutup.

