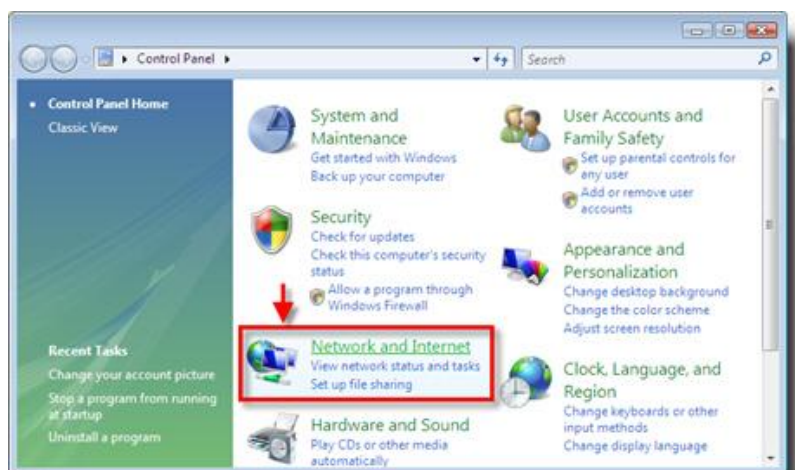
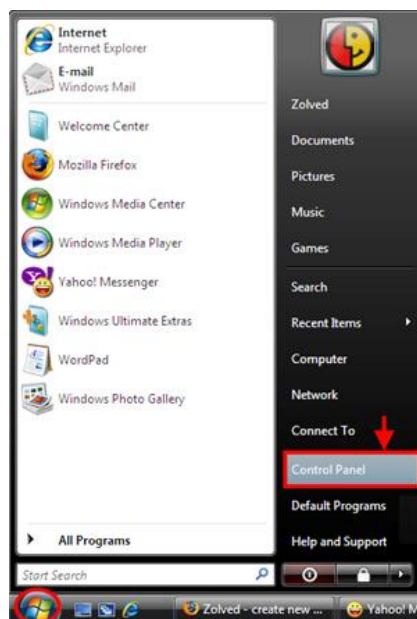


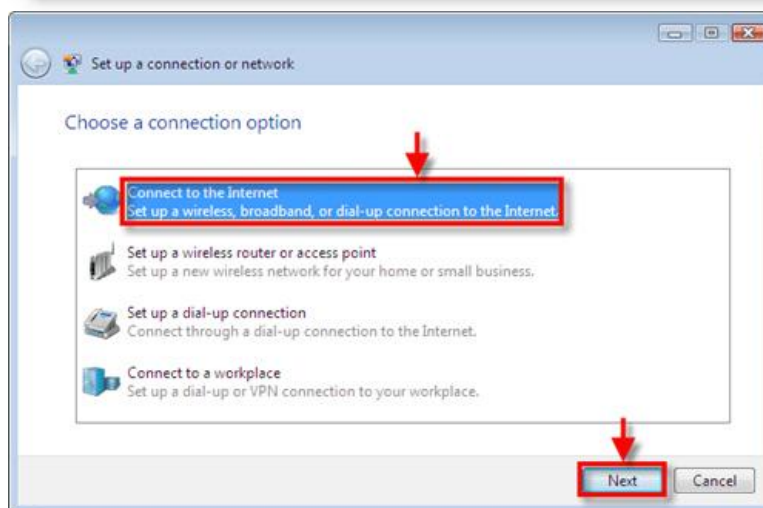
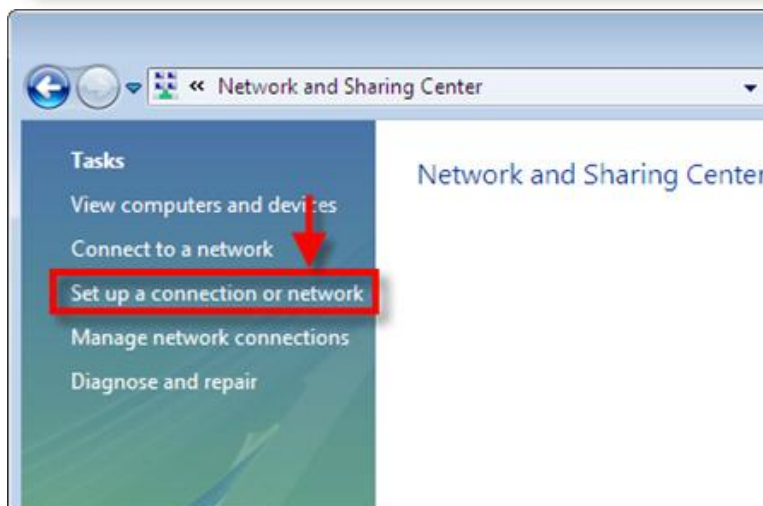
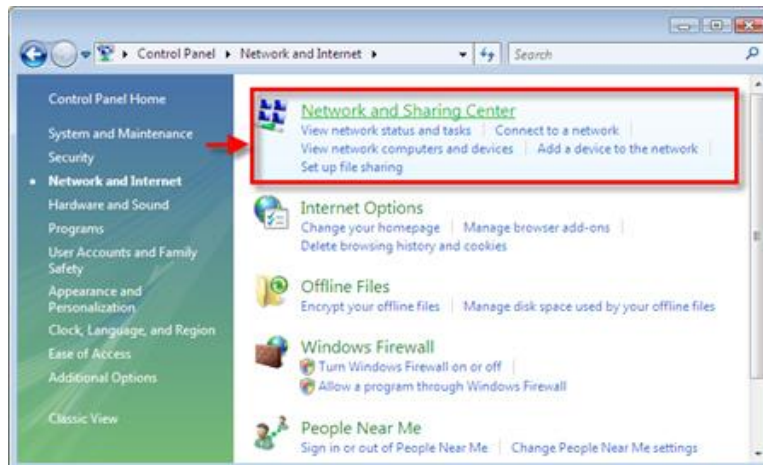
## Setting connection for Windows Vista

Reference from Microsoft Support site: <http://windowshelp.microsoft.com/Windows/en-US/Help/f573e922-3dde-baac-69ef-a11548a83411033.msp>

The Connect to the Internet wizard will guide you through the steps of setting up a Point-to-Point Protocol over Ethernet (PPPoE) Internet connection.

1. Open the Connect to the Internet wizard by clicking the Start - Control Panel - Network and Internet - Network and Sharing Center - Set up a connection or network - Connect to the Internet.
1. Buka Connect to the Internet wizard dengan cara klik Start - Control Panel - Network and Internet - Network and Sharing Center - Set up a connection or network - Connect to the Internet.





2. On the left Network Task Column, click on Create a new connection.

2. Pada halaman How do you want to connect?, silahkan pilih Broadband (PPPoE).



3. On the How do you want to connect? please select Broadband (PPPoE).

3. Silahkan mengikuti langkah-langkah dari wizard tersebut.

