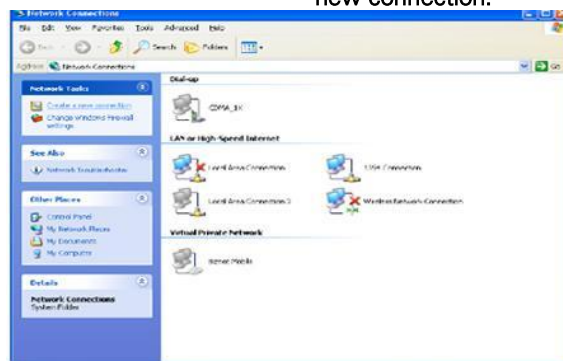


Setting connection for Windows XP

1. Go to Start - Settings - Network Connections. Right click on Network Connection and select Open.
1. Klik ke Start -> Settings -> Network Connections. Klik kanan di Network Connection dan pilih Open.



2. On the left Network Task Column, click on Create a new connection.
2. Di kolom sebelah kiri Network Task, klik di Create a new connection.



3. New Connection Wizard box as below will show up as shown below. Click Next to continue.
3. Kotak New Connection Wizard seperti dibawah akan muncul. Klik Next untuk ke langkah berikutnya.



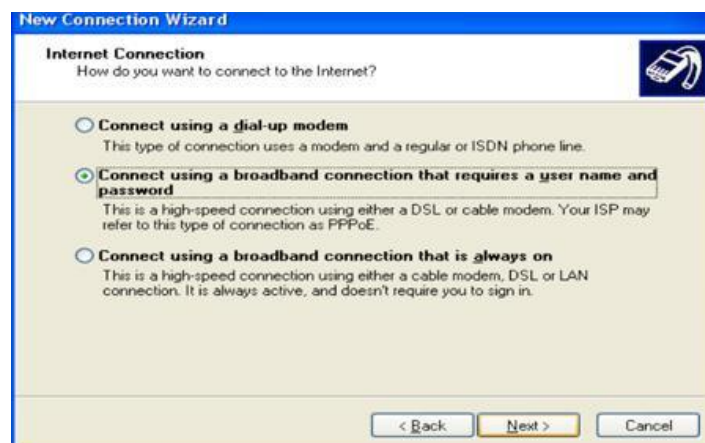
4. Select on Connect to the Internet, click Next to continue.
4. Pilih Connect to the Internet, klik Next untuk langkah selanjutnya.



5. Select on Set up my connection manually, click Next to continue. 5. Pilih Set up my connection manually, klik Next untuk langkah selanjutnya.



6. Select on Connect using a broadband connection that requires a user name and password, click Next to continue. 6. Pilih Connect using a broadband connection that requires a user name and password klik Next untuk langkah selanjutnya.



7. On the ISP Name, type Biznet MetroNET, click Next to continue. 7. Untuk ISP Name, ketik Biznet MetroNET, klik Next untuk langkah selanjutnya.



8. Select on Anyone's use, click Next to continue.

8. Pilih Anyone's use, klik Next untuk langkah selanjutnya.



9. Type User name, Password and Confirm Password assigned to you by Biznet. Click Next to continue.

9. Ketik User name, Password and Confirm Password yang diberikan Biznet kepada Anda. Klik Next untuk langkah selanjutnya.



10. Your Biznet Prepaid Broadband connection is setup properly. You can check on Add a shortcut to this connection to my desktop if you want to add a shortcut to your desktop. Click Finish to continue.

10. Koneksi Biznet Home Prepaid Broadband Anda sudah teratur dengan baik. Anda dapat mengeceknya di Add a shortcut to this connection to my desktop jika Anda ingin menambah shortcut pada Desktop Anda. Klik Finish untuk ke langkah selanjutnya.



11. A connection box will show up. Click on Connect to connect to the Internet.

11. Kotak koneksi akan muncul. Klik di Connect untuk menghubungkan ke Internet.



12. Connection status box will appear, you will be connected to Internet.

12. Status kotak koneksi akan keluar dan Anda akan terkoneksi ke Internet.

